

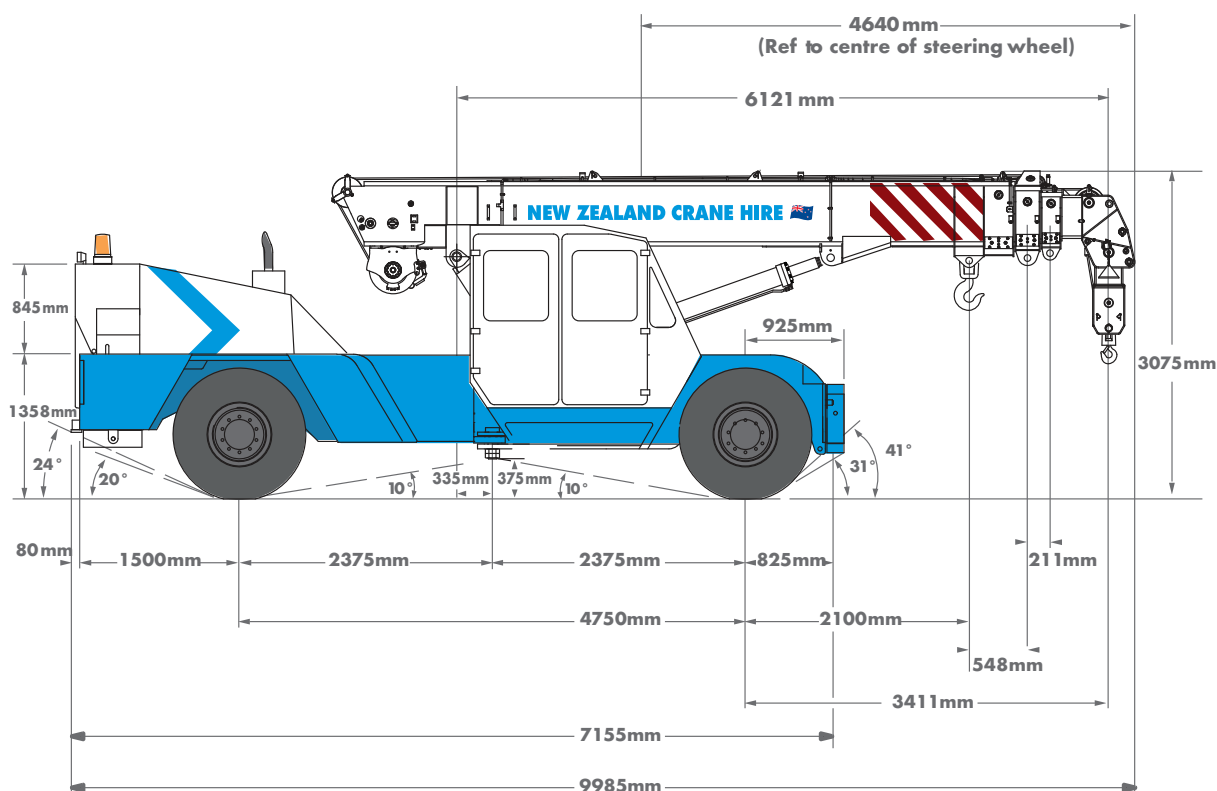
MAC 25-4 SL

Specification Sheet

25 TONNE

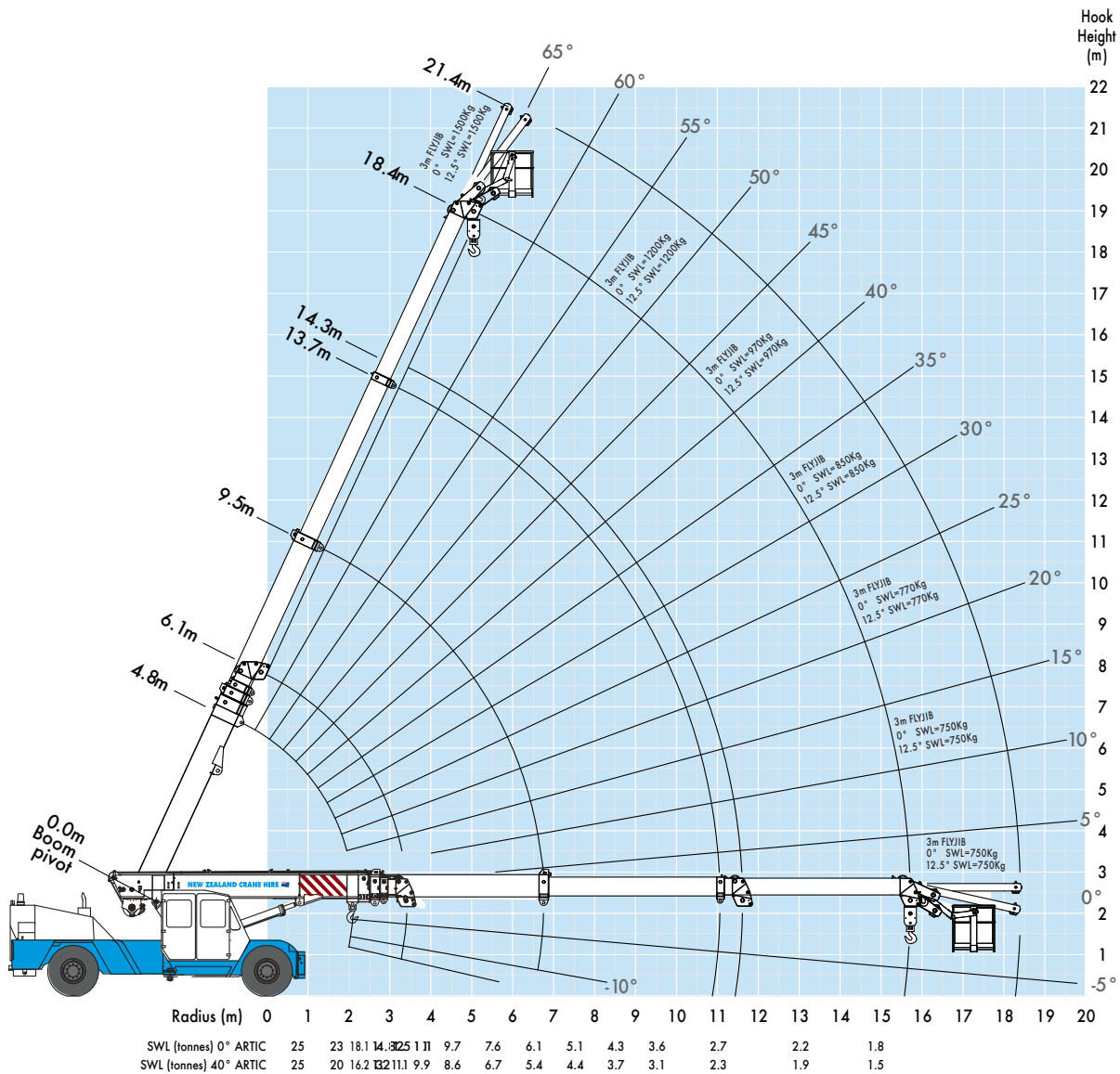


Dimensions



MAC 25-4 SL

Working Range



MAC 25-4 SL

Load Chart



Pick & Carry 0.4 m/s (1.44 km/h); On rubber 66.6%



6.1–14.0 m

AS 1418.5

m	Boom Length (m)													m
	6.1	6.5	7.0	7.5	8.0	8.5	9.0	9.5	10.0	11.0	12.0	13.0	14.0	
kg	kg	kg	kg	kg	kg	kg	kg	kg	kg	kg	kg	kg	kg	kg
1.4	24000	23950	23950	23950	23900	23900	23550							1.4
	23450	23450	23400	23400	23400	23350	23350							
	49°	52°	56°	58°	61°	63°	65°							
2.0	20100	20050	20050	20000	19950	19950	19900	19850	19850					2.0
	18050	18000	17950	17900	17900	17850	17850	17800	17800					
	41°	45°	49°	52°	55°	58°	60°	62°	64°					
2.5	15800	15750	15750	15700	15700	15650	15650	15600	15600	15550				2.5
	15100	15100	15050	15050	15000	15000	14950	14950	14950	14900				
	14150	14100	14100	14050	14050	14000	14000	13950	13950	13900				
	33°	38°	43°	47°	51°	54°	56°	58°	60°	64°				
3.0	12900	12900	12850	12850	12800	12800	12750	12750	12700	12700	12700			3.0
	12350	12350	12300	12300	12300	12250	12250	12200	12200	12150	12150			
	11500	11500	11500	11450	11450	11400	11400	11350	11350	11300				
	22°	30°	36°	41°	46°	49°	52°	54°	57°	60°	64°			
3.5	10850	10800	10800	10800	10800	10750	10750	10750	10700	10700	10650	10650		3.5
	10350	10350	10350	10350	10300	10300	10300	10250	10250	10200	10200	10200		
	9650	9650	9650	9600	9600	9600	9550	9550	9550	9500	9500	9100		
	(3.5)	19°	28°	35°	40°	44°	47°	50°	53°	57°	61°	63°		
4.0		9600	9250	9250	9250	9250	9250	9200	9200	9150	9150	9150	9100	4.0
		9200	8850	8850	8850	8850	8800	8800	8800	8750	8750	8700	8700	
		8550	8250	8250	8200	8200	8200	8150	8150	8100	8100	8050	8150	
		(3.9)	18°	27°	34°	39°	43°	46°	49°	54°	58°	61°	63°	
5.0			8300	7300	7100	7100	7100	7050	7050	7050	7000	7000	7000	5.0
			7950	6950	6750	6750	6750	6750	6750	6700	6700	6700	6650	
			7350	6450	6250	6250	6250	6250	6250	6200	6200	6200	6050	
			(4.4)	(4.9)	17°	26°	32°	37°	40°	46°	51°	55°	58°	
6.0					6450	5750	5650	5650	5600	5600	5600	5600	5600	6.0
					6150	5500	5350	5350	5350	5350	5350	5300	5300	
					5700	5050	4950	4950	4950	4900	4900	4900	4900	
					(5.4)	(5.9)	16°	24°	30°	38°	44°	49°	53°	
7.0							5200	4700	4600	4600	4600	4600	4550	7.0
							4950	4450	4350	4350	4350	4350	4350	
							4550	4100	4000	4000	4000	4000	3950	
							(6.4)	(6.9)	15°	29°	37°	42°	47°	
8.0									4250	3800	3800	3800	3800	8.0
									4050	3600	3600	3600	3600	
									3700	3300	3300	3300	3300	
									(7.4)	14°	27°	35°	41°	
9.0										3550	3200	3200	3200	9.0
										3350	3050	3050	3000	
										3050	2750	2750	2750	
										(8.4)	14°	26°	34°	
10											3000	2750	2750	10
											2850	2550	2550	
											2550	2300	2300	
											(9.4)	13°	25°	
11												2550	2350	11
												2400	2200	
												2150	1950	
												(10.4)	13°	
12													2200	12
													2050	
													1850	
													(11.4)	

- RC (kg) at 0° articulation
- RC (kg) at 25° articulation
- RC (kg) at 40° articulation
- Boom angle
- Radius at 0° boom angle
- Loads above red line are structural

Notes to lifting capacity

Lifting capacities do not exceed 66.6% of tipping load. Weight of hook blocks and slings is part of the load, and is to be deducted from the capacity ratings. Consult Rated Capacity Manual for further details.

Data published herein is intended as a guide only and shall not be construed to warrant applicability for lifting purposes. Crane operation is subject to the computer charts and Rated Capacity Manual both supplied with the crane.